

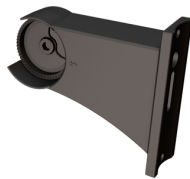


LED Trail
 E-mail: info@ledtrail.com
www.ledtrail.com

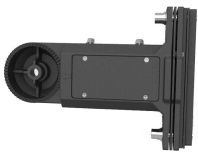
P/N: 43300



AM



DM



A&D

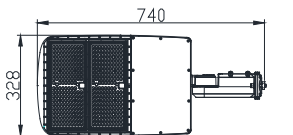


YM

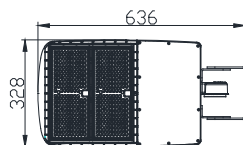


FM

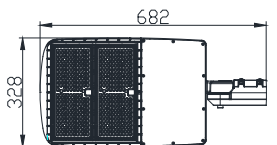
DIMENSIONS



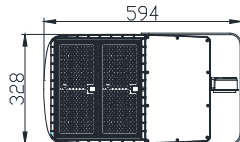
A&D



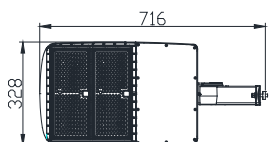
YM



AM



FM



DM

Advantage:

- UL cUL DLC certificate.
- Seoul Chip, high CRI
- IP65 driver, Input voltage 100-277Vac
- Output constant current lever can be adjusted through output cable with 1-10V.
- No UV or IR in the beam
- Easy to install and operate
- Energy saving, Long lifespan
- Light is soft and uniform, Safe to eyes
- Instant start, NO flickering, NO humming
- Green and eco-friendly without mercury.

Application:

- Outdoor basketball court, tennis court.
- Badminton court, the football field.
- The school playground, stadium.
- Community leisure entertainment plaza, road lamp etc.

SPECIFICATIONS

OPTICAL	Input Power	300W
	Lumen	39000-42000LM
	Lumen Efficacy	130-140 LM/W
	Color Temperature	3000K, 4000K, 5000K, 5700K
	CRI	>70
	Viewing Angle	160*96 Degree (Type III)
ELECTRICAL	Input Voltage	100-277VAC 50/60Hz
	PF	≥0.9
	THD	≤20%
	Optional Accessory	Photocell / Surge protector/ Motion sensor/Socket
MATERIALS	LED Brand	Seoul
	LED Type	3030
	LED QTY	378PCS
	Housing	Aluminum Alloy
	Housing Color	Black / Brown/white/Customized
	Waterproof Rating	WET (IP65)
OTHERS	Operating Temperature	-40°C TO 50°C
	Operating Humidity	10%-90% RH
	Storage Temperature	-40°C TO 80°C
	Storage Humidity	10%-95% RH
	Warranty Time	5 Years

LIGHT DISTRIBUTION TESTING PARAMETERS

Luminaire Property

Luminaire Manufacturer:

Voltage: 120.1 V

Power: 299.17 W

Current: 2.496 A

Power Factor: 0.998

Photometric Results

IES Classification: Type III

Total Rated Lamp Lumens: 39716.7 lm

Efficiency: 100%

Upward Ratio: 0%

Central Intensity: 241.79 cd/klm

Pos of Max. Intensity: H10 V69

Longitudinal Classification: Medium

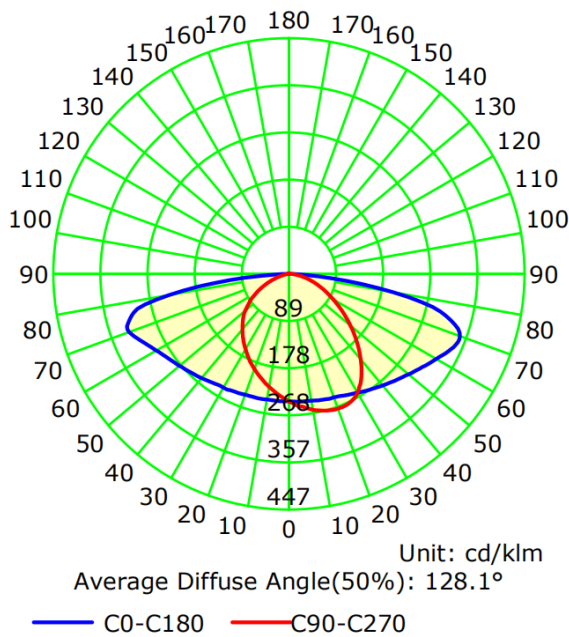
Measurement Flux: 39716.7 lm

Downward Ratio: 100%

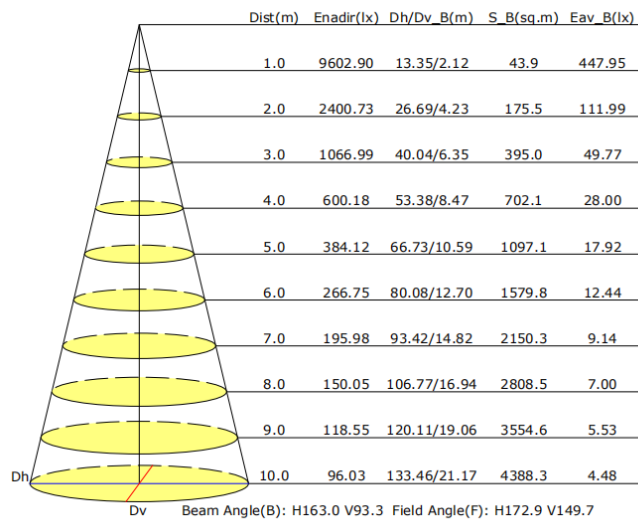
Luminaire Efficacy Rating (LER): 132.81

Max. Intensity: 357.9 cd/klm

Luminous Intensity Distribution Curve



Illuminance at a Distance



USER NOTICE

- Please turn off power before installing or changing assembly parts.
- The input voltage and lamp's should match. After connecting the power line, please make sure the wiring section is insulated.
- Non-professionals must not install or disassemble the lamps.

TROUBLE SHOOTING

Troubles	Check points
Flickering light	Turn off the power and turn on again in 3 minutes. If same phenomena occurs, then call your dealer.
Not working	Please check the connection.