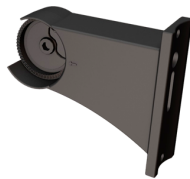


LED Trail
E-mail: info@ledtrail.com
www.ledtrail.com

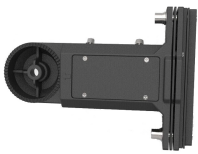
P/N: 43150-HL-T3AMA1



AM



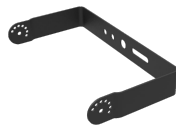
DM



A&D

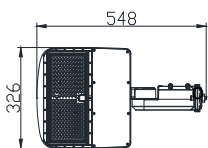


YM

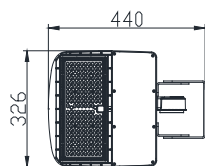


FM

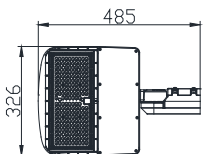
DIMENSIONS



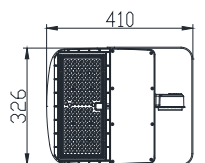
A&D



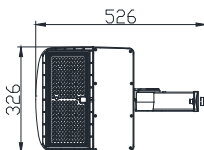
YM



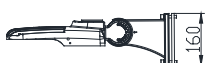
AM



FM



DM



Advantage:

- UL cUL DLC certificate.
- Seoul Chip, high CRI
- IP65 driver, Input voltage 100-277Vac
- Output constant current lever can be adjusted through output cable with 1-10V.
- No UV or IR in the beam
- Easy to install and operate
- Energy saving, Long lifespan
- Light is soft and uniform, Safe to eyes
- Instant start, NO flickering, NO humming
- Green and eco-friendly without mercury.

Application:

- Outdoor basketball court, tennis court.
- Badminton court, the football field.
- The school playground, stadium.
- Community leisure entertainment plaza, road lamp etc.

SPECIFICATIONS

| | | |
|-------------------|-----------------------|---|
| OPTICAL | Input Power | 150W |
| | Lumen | 19500-21000LM |
| | Lumen Efficacy | 130-140 LM/W |
| | Color Temperature | 3000K, 4000K, 5000K, 5700K |
| | CRI | >70 |
| | Viewing Angle | 160*96 Degree (Type III) |
| ELECTRICAL | Input Voltage | 100-277VAC 50/60Hz |
| | PF | ≥0.9 |
| | THD | ≤20% |
| | Optional Accessory | Photocell / Surge protector/ Motion sensor/Socket |
| MATERIALS | LED Brand | Seoul |
| | LED Type | 3030 |
| | LED QTY | 189PCS |
| | Housing | Aluminum Alloy |
| | Housing Color | Black / Brown/white/Customized |
| | Waterproof Rating | WET (IP65) |
| OTHERS | Operating Temperature | -40°C TO 50°C |
| | Operating Humidity | 10%-90% RH |
| | Storage Temperature | -40°C TO 80°C |
| | Storage Humidity | 10%-95% RH |
| | Warranty Time | 5 Years |

LIGHT DISTRIBUTION TESTING PARAMETERS

Luminaire Property

Luminaire Manufacturer:
 Voltage: 119.6 V
 Power: 151.99 W

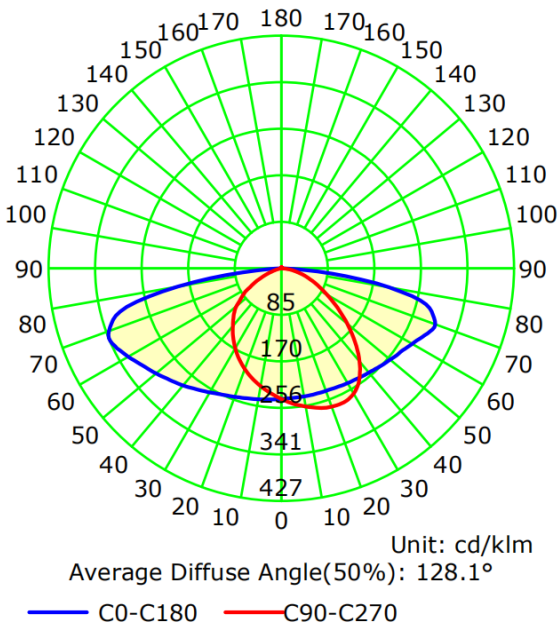
Current: 1.272 A
 Power Factor: 0.998

Photometric Results

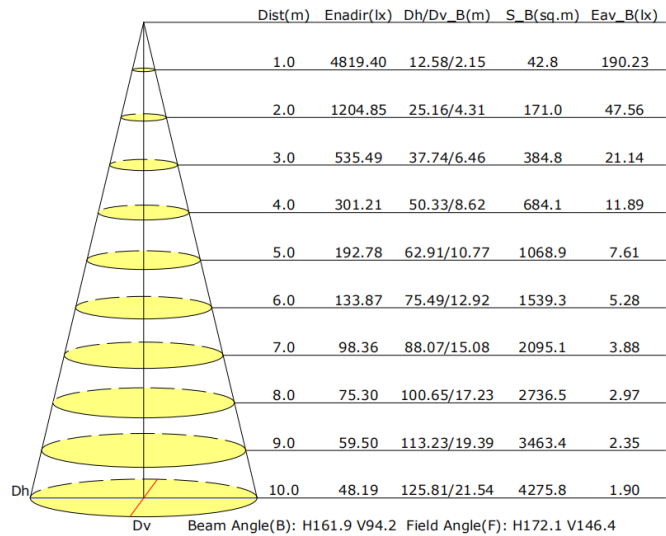
IES Classification: Type III
 Total Rated Lamp Lumens: 20080.9 lm
 Efficiency: 100%
 Upward Ratio: 1%
 Central Intensity: 240 cd/klm
 Pos of Max. Intensity: H180 V68

Longitudinal Classification: Medium
 Measurement Flux: 20080.9 lm
 Downward Ratio: 99%
 Luminaire Efficacy Rating (LER): 132.17
 Max. Intensity: 341.81 cd/klm

Luminous Intensity Distribution Curve



Illuminance at a Distance



USER NOTICE

- Please turn off power before installing or changing assembly parts.
- The input voltage and lamp's should match. After connecting the power line, please make sure the wiring section is insulated.
- Non-professionals must not install or disassemble the lamps.

TROUBLE SHOOTING

| Troubles | Check points |
|------------------|--|
| Flickering light | Turn off the power and turn on again in 3 minutes. If same phenomena occurs, then call your dealer. |
| Not working | Please check the connection. |