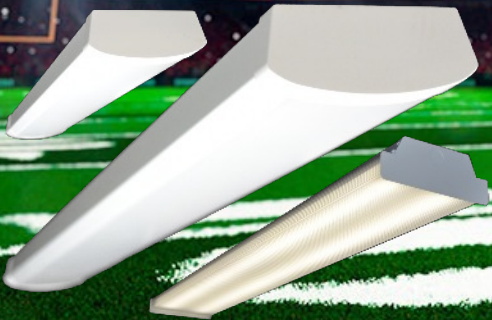
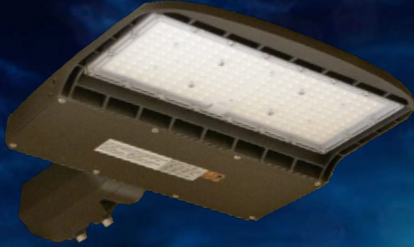


# LED TRAIL

Save Energy | Save Money™



## 2024 LED Lighting Catalog & Specification Guide

LED Corn Lights

LED Cone Lights

LED Flat Canopy Lights

LED Downlights

Magnetic LED Troffer Retrofit

Linear LED Wrap Lights

Linear LED Strip Lights

LED Panel lights

LED Troffer Fixtures

SunRiver LED Flood Lights

SunRiver G6 LED Flood Lights

LED Slim Canopy Lights

SunRiver G14 LED Flood Lights

UFO LED High Bay Lights

Linear LED High Bay Lights

Adjustable LED Wall Packs

LED Wall Pack Lights

EZ-Mount LED Batten Lights

EZ-Mount LED Tri-Proof Lights

LED Pole/Area Lights

Backlit LED Panel Lights

LED Trail is a Portland, OR based company specializing in design, development and manufacturing of Commercial and Industrial LED lighting products.

**Our mission is to enhance customer value through product innovation and agile solution delivery.**

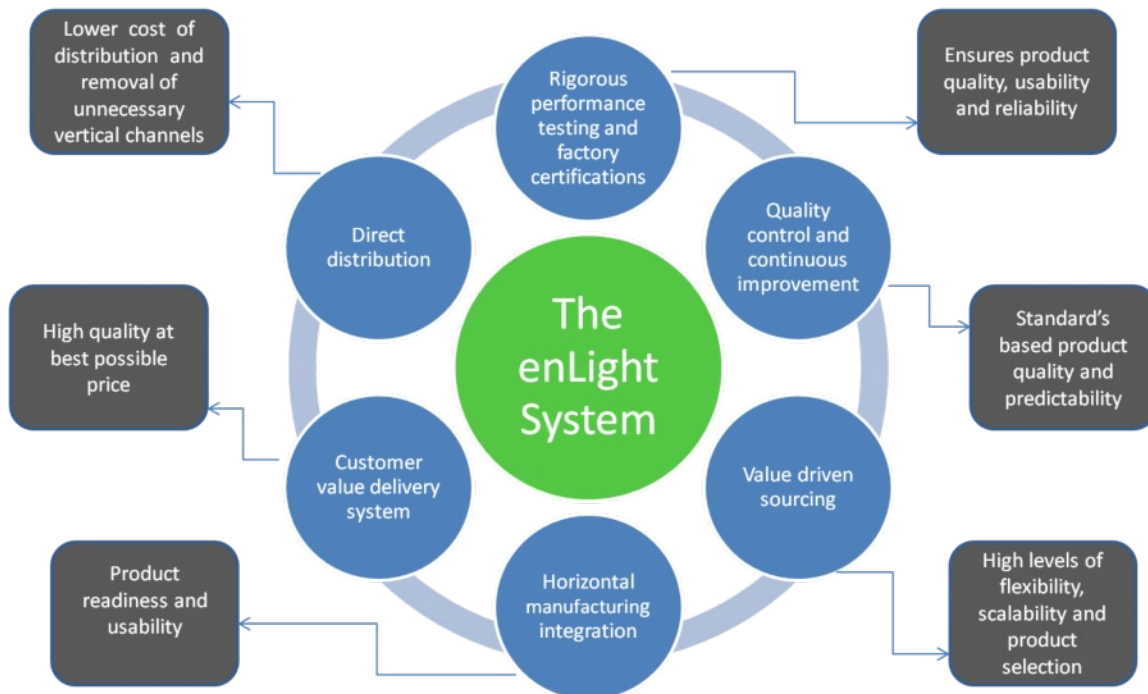
### Why LED Trail?

- ▶ Comprehensive selection of Commercial and Industrial LED lighting.
- ▶ World-class horizontal supply chain integration system to provide high value with the quality you need at competitive pricing.
- ▶ *Agile* and *Innovative* approach in *Design* and *Development* of LED lighting.
- ▶ Rigorous testing, and quality control/assurance processes.
- ▶ Trace back processes for product manufacturing and continuous improvement.
- ▶ Exceptional product and manufacturing certification processes.

### Advantages of LED Trail Lighting

- ▶ High quality components
- ▶ Long lasting chips
- ▶ Environment friendly processes
- ▶ Efficiency focused
- ▶ Design flexibility
- ▶ Maintenance reduction
- ▶ Controllable features
- ▶ Versatility
- ▶ Earth-friendly recycling
- ▶ Emphasis on value
- ▶ Innovation and agility

## enLight is the difference



Not all products are qualified on the DLC QPL. To view our DLC qualified products, please consult the DLC Qualified Product List at [www.designlights.org/qpl](http://www.designlights.org/qpl).

Trade marks listed in this catalog are the property of their respective companies. These have been displayed as a sample of the certifications and some of the components that are used in some of LED Trail branded products. This should not be interpreted as an endorsement of LED Trail for these organizations and vice versa.



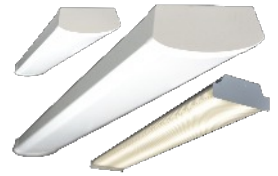
GoldBeach LED Panel Lights  
Page 4



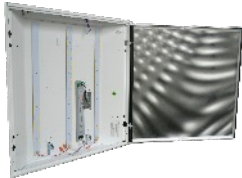
GoldBeach Backlit LED Panels  
Page 5



GoldBeach LED Troffer fixture  
Page 6



Linear LED Strip and Wraps  
Page 7



Magnetic LED Troffer Retrofit  
Page 8



SunRiver LED Flat Canopy  
Page 9



RoseCity LED Corn Bulbs  
Page 10



RoseCity LED Cone Bulbs  
Page 11



EZ-Mount LED Batten Light  
Page 12



EZ-Mount LED Tri-Proof Lights  
Page 13



LED Downlight Fixtures  
Page 14



SunRiver Slim LED Canopy  
Page 15



Crater UFO LED High Bays  
Page 16



Linear LED High Bays  
Page 17



SunRiver G14 LED Flood Lights  
Page 18



SunRiver LED Flood Lights  
Page 19



SunRiver G6 LED Flood Lights  
Page 20



Astoria LED Shoebox Fixture  
Page 21



Adjustable LED Wall Packs  
Page 22



SunRiver LED Wall Packs  
Page 23

# GoldBeach LED Panel Lights



## Featu

- ◆ Attractive external appearance.
- ◆ Low power consumption.
- ◆ Easy installation.
- ◆ Significantly longer life span than traditional lamps.
- ◆ Dimmable.

## Applications

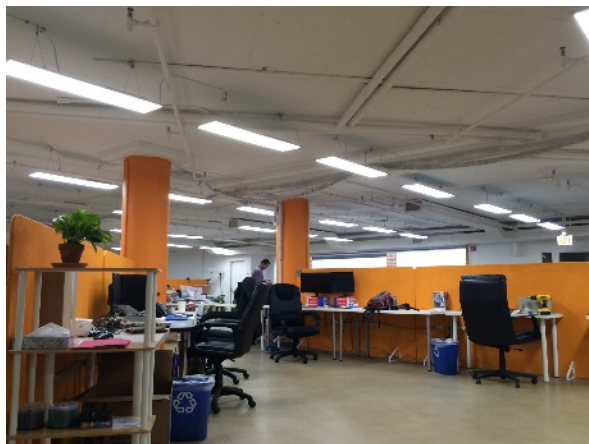
- ◆ Conference rooms
- ◆ Classrooms
- ◆ Hospitals
- ◆ Replacement for T8 troffer
- ◆ Retrofitting can lights
- ◆ Many other indoor lighting applications

## Product Description

GoldBeach LED panel lights are a part of an innovative indoor lighting design with high lumens and a DLC Premium listing. The unique design of our LED panel lights allows for even illumination and soft lighting form. Our panel lights have an attractive external appearance as well as very low power consumption. GoldBeach panel lights are available in standard sizes of 1'x4', 2'x2', and 2'x4'. These lights include a standard 0-10V dimming feature, and offer a universal 100-277Vac.

## Technical Data

Product No.	Watt	Size	CCT	Luminous Output	Voltage	Dimmable
6011-P-30W	30	1' * 4' * 2"	4000K 5000K	~3900lm	AC100~277V	0-10V
6020-P-30W	30	2' * 2' * 2"		~3900lm		
6031-P-30W	30	2' * 4' * 2'		~3900lm		
6031-P-40W	40	2' * 4' * 2"		~5200lm		



# GoldBeach Backlit LED Panels



## Features

- ◆ Color Tune 3500K, 4000K, or 5000K.
- ◆ Adjustable Wattage.
- ◆ Easy installation.
- ◆ Significantly longer life span than traditional lamps.
- ◆ Dimmable.

## Applications

- ◆ Conference rooms
- ◆ Classrooms
- ◆ Hospitals
- ◆ Replacement for T8 troffer
- ◆ Retrofitting can lights
- ◆ Many other indoor lighting applications



## Product Description

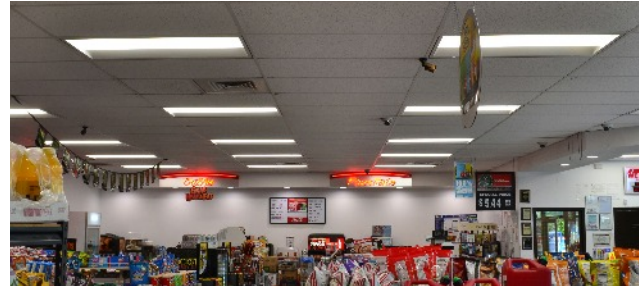
GoldBeach Backlit LED panel lights are a versatile LED solution that feature tunable CCT and wattage options to suite any indoor commercial environment. The design of our backlit LED panel light is high in lumen efficiency, easy to install and operate, and emits a soft, even ambiance for a variety of applications. GoldBeach backlit panel lights are available in standard sizes of 1'x4', 2'x2', and 2'x4', and include a standard 0-10V dimming feature with universal 100-277Vac.

## Technical Data

Product No.	Watt	Size	CCT	Luminous Output	Voltage	Dimmable
6011BL	25/30/40	1' * 4' * 2"	3500K, 4000K, 5000K	2950~4400lm	AC100~277V	0-10V
6020BL		2' * 2' * 2"				
6031BL	30/40/50	2' * 4' * 2'		3540~5500lm		



# GoldBeach LED Troffer fixture



## Features

- ◆ Energy saving and long life span.
- ◆ Adjustable CCT and wattage
- ◆ Galvanized steel body
- ◆ A perfect replacement for traditional fluorescent troffer lighting.
- ◆ Dimmable .

## Applications

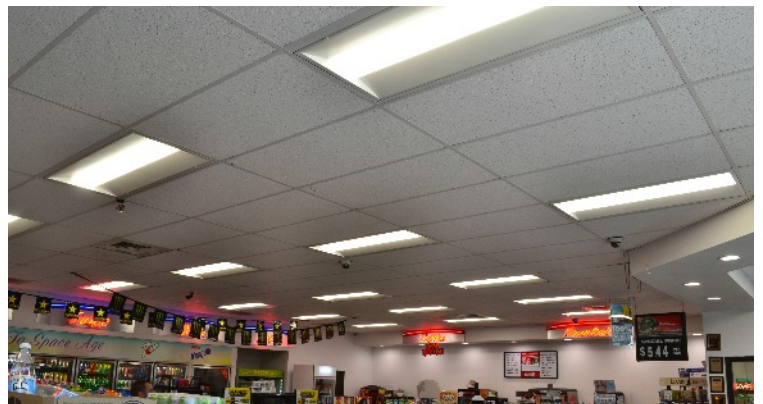
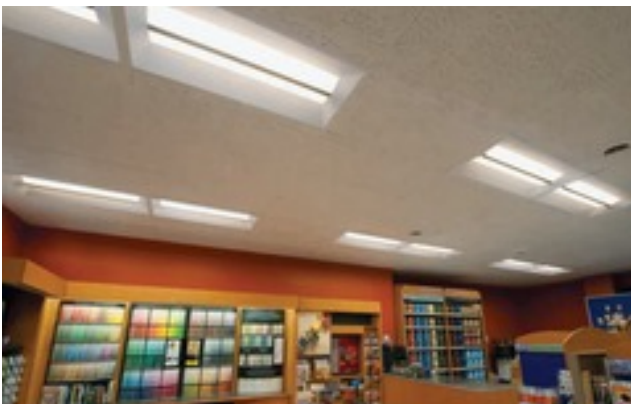
- ◆ Hotel
- ◆ Show room
- ◆ Lobby
- ◆ Office

## Product Description

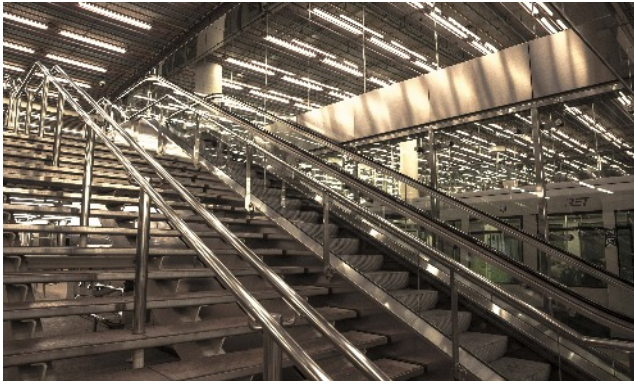
LED Trail's innovative lensed troffer series offer service professionals an economical solution to safely upgrade traditional troffers in about 10 minutes. The edge-lit LED light source emanates the perfect ambience into the environment, and is CCT and wattage tunable to offer maximum versatility for indoor commercial applications.

## Technical Data

Product No.	Watt	Replacement Size	CCT	Luminous Output	Voltage	CRI	Dimming
LTR22GB	20/25/30	2x2 Troffer	3500K, 4000K, 5000K	2540~3750lm	AC100~277V	≥80	0-10V
LTR24GB	25/30/34	2x4 Troffer		3175~4284lm			



# Linear LED Strip and Wrap Fixtures



## Feature

## Applications

- ◆ 50% less power consumption compared to fluorescent lamps
  - ◆ 50,000 life hours vs. 10,000 to 15,000 for fluorescent lamps
  - ◆ Powerful lumen output combined with effective light distribution
  - ◆ No mercury or other harmful elements
- ◆ Office/Professional Buildings
  - ◆ Retail Storefronts
  - ◆ Commercial Properties
  - ◆ Other industrial, and commercial applications



## Product Description

LED Trail is a pioneer in bringing the advantages of highly efficient LED replacements for wasteful fluorescent lighting in industrial, retail, hospitality, healthcare, and commercial applications. LED Trail offers a variety of LED lighting products for new applications and replacement projects. Our Linear LED Wrap fixtures are an ideal replacement for existing T8, T10, and T12 fluorescent tube fixtures. By switching to LED wrap fixtures you can save energy and lower your electrical bill for lighting by 50% or more compared to equivalent fluorescent fixtures.

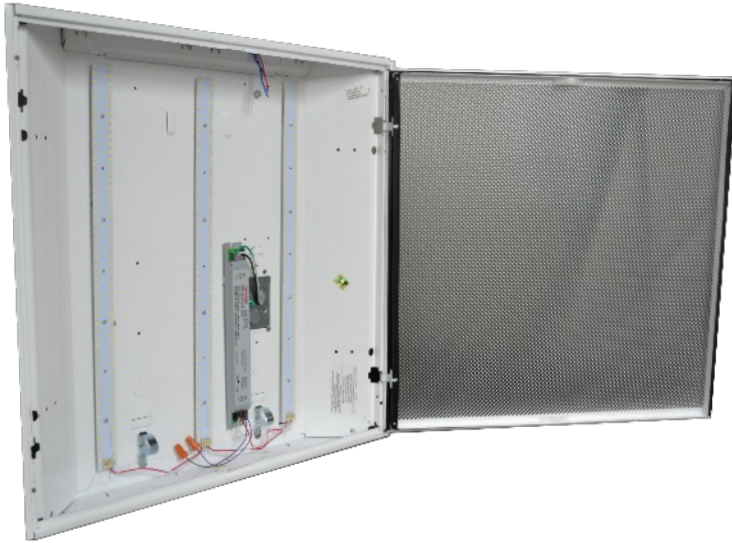
## Technical Data

Product No.	Watt	Size (Inch)	CCT	Luminous Output	Voltage	Dimmable
STP220S	20	24*2.28*2.48	30K/40K/50K	~2600lm	AC100~277V	0-10V
STP440S	20/30/40	48*2.28*2.48		~5200lm		
WRP220E	20	24.4*5.3*2.1	4000K or 5000K	~2200lm		
WRP422	22	47.7*7.1*2.8		~2880lm		
WRP432E	32	47.6*5.3*2.1		~3520lm		



STP440S

# Magnetic LED Retrofit Kits



## Features

- ◆ Quick and convenient installation with existing luminaire body within 3 minutes.
- ◆ Mounting method: Magnetic, quick-connect
- ◆ Flicker free, smooth and comfortable light
- ◆ No mercury or other harmful elements
- ◆ Very low heat discharge
- ◆ High lumens - 130lm/W

## Applications

- ◆ Offices
- ◆ Lobbies
- ◆ Common Areas
- ◆ Other commercial and industrial applications

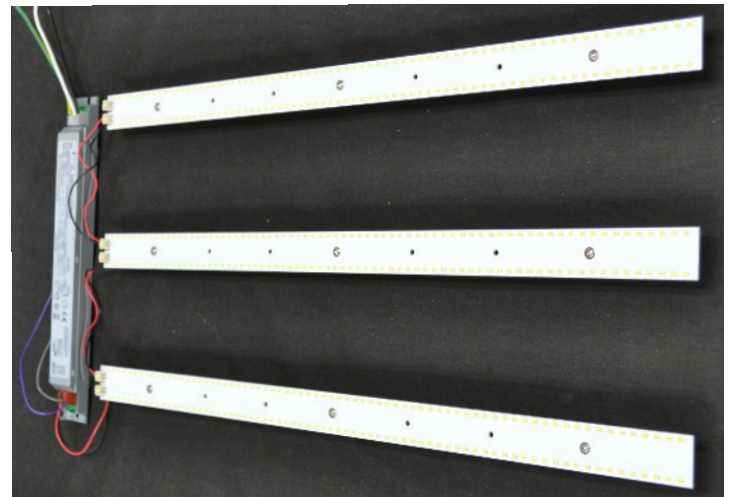


## Product Description

LED Trail's innovative magnetic troffer retrofit kit series offer service professionals an economical solution to safely upgrade traditional troffers and can be retrofitted into most existing troffers in about 10 minutes. The DLC Premium, high lumen LED light source emanates the perfect ambience into the environment and provides an attractive return on investment.

## Technical Data

Product No.	Watt	Replacement	CCT	Luminous Output	Voltage	CRI	Dimming
LTR-MG-22-20W	20	2x2 Troffer	3500K 4000K 5000K	~2600lm	AC100~277V	>90	0-10V
LTR-MG-22-30W	30			~3900lm			
LTR-MG-14-30W	30	1x4 Troffer		~3900lm			
LTR-MG-24-40W	40	2x4 Troffer		~5200lm			
LTR-MG-24-50W	50			~6500lm			





# SunRiver LED Flat Canopy Lights



## Features

- ◆ Top of the line chips and components.
- ◆ Instant start, NO flickering, NO humming
- ◆ Light is soft and uniform, safe to eyes
- ◆ Easy to install and operate
- ◆ Modern design for a clean look.

## Applications

- ◆ Gas stations
- ◆ Commercial awnings
- ◆ Entry ways
- ◆ Covered walkways
- ◆ Loading areas
- ◆ Parking garage lighting

## Product Description

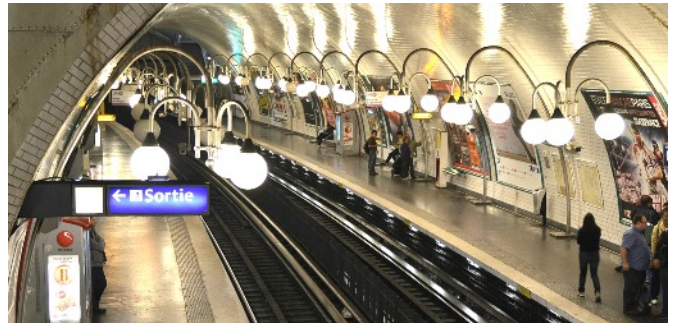
SunRiver Flat LED canopy lights offer significant energy savings, superior performance, reduced maintenance and unsurpassed durability in a commercial fixture. LED Trail LED canopy lights deliver enhanced lighting control and dramatically improved light levels, resulting in better uniformity and overall visibility. The modern design and sleek styling of these canopy lights are an elegant solution for gas station and parking garage applications.

## Technical Data

Product No.	Watt	Size (Inch)	CCT	CRI	Luminous Output	Voltage	IP
476150	150	15*15*3	5000K	>80	~15500lm	AC 100~277V	65



# RoseCity IP65 LED Corn Bulb



## Features

- ◆ Wattage and CCT selectable
- ◆ 50,000 life hours vs. 10,000 to 15,000 for HID lamps
- ◆ Powerful lumen output combined with effective light distribution
- ◆ No mercury or other harmful elements
- ◆ Very low heat discharge
- ◆ No UV radiation

## Applications

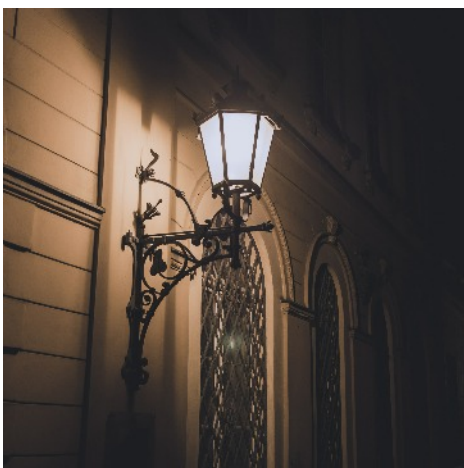
- ◆ Roadway and campus lighting
- ◆ Post Top
- ◆ Security lighting
- ◆ Parks and walkways
- ◆ City and Municipal lighting
- ◆ Ornamental streetlights

## Product Description

RoseCity LED corn bulbs allow you to replace inefficient traditional bulbs with highly efficient and bright LEDs. These bulbs replace CFL and HID bulbs that range between 50W to 400W. The design of these LEDs allow for 360 degree illumination to exactly replicate traditional bulbs in light coverage and color temperature. *Requires removal of existing ballast and rewiring of the socket in existing fixtures.*

## Technical Data

Product No.	Watt	Size (Inch)	CCT	Luminous Output	Replacement	Base type	Voltage
LTR-CLW08C-27W	12, 18, 27	Φ2.4*L7.3	3000K, 4000K, 5000K	1500~3395lm	≤70W-100W CFL, HID	E26 standard E39 option	AC100~277V
LTR-CLW08C-45W	27, 36, 45	Φ3.3*L9.8		3395~6350lm	≤100W-150W CFL, HID		
LTR-CLW08C-63W	45, 54, 63	Φ3.3*L10.1		6350~8480lm	≤175W-300W HID		



# RoseCity IP64 LED Cone Bulb



## Features

- ◆ 70% less power consumption compared to HID lamps.
- ◆ 50,000 life hours vs. 10,000 to 15,000 for HID lamps.
- ◆ Powerful lumen output combined with effective light distribution.
- ◆ No mercury or other harmful elements.

## Applications

- ◆ Roadway and campus lighting
- ◆ Post Top
- ◆ Security lighting
- ◆ Parks and walkways
- ◆ City and Municipal lighting
- ◆ Ornamental streetlights



CO2773



## Product Description

Our RoseCity LED Cone Lights are fully encapsulated (IP64 rating) and allow you to replace inefficient bulbs into energy saving LED using top of the line components in a convenient reversible cone shape. RoseCity bulbs are offered in several wattages from 30W to 80W to replace existing CFL or HID bulbs that range between 50W and 400W. *Requires removal of existing ballast and rewiring of the socket in existing fixtures.*

## Technical Data

Product No.	Watt	Base Type & Size (Inch)	CCT	Luminous Output	Replacement	IP	Voltage
CO2773-BT-40W	40	E26: $\Phi 5.12 \times L6.97$	4000K 5000K	~4800lm	$\leq 150W$ CFL, HID	64	AC100~277V
CO2774-BT-60W	60	E39: $\Phi 5.12 \times L6.97$		~7200lm	$\leq 2000W$ HID		
CO2776-BT-80W	80	E39: $\Phi 5.12 \times L7.83$		~9600lm	$\leq 300W$ HID		



CO2774



CO2776

# EZ-Mount LED Batten Light



## Features

- ◆ Dust tight as well as water and impact resistant.
- ◆ Wide 120° beam angle.
- ◆ Reduce maintenance costs
- ◆ Mounted on ceilings, walls, or suspended from ceiling. Daisy-chain linkable.

## Applications

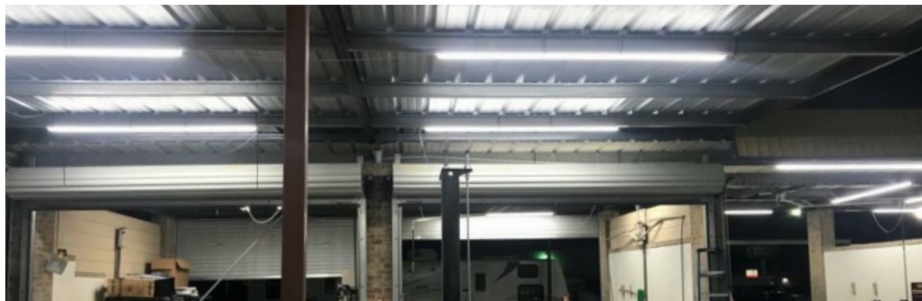
- ◆ Industrial
- ◆ Parking garage
- ◆ Tunnel
- ◆ Supermarket
- ◆ Warehouse

## Product Description

LED linear batten lights by LED Trail are the efficient and heavy-duty alternative to traditional light fixtures. Like our larger Tri-Proof fixtures, these lights are used in industrial lighting, machine shops, textile mills, pharmaceutical plants, warehouse lighting, parking garage lighting, tunnel lighting, supermarket lighting and many more applications. This fixture is specialty made with a corrosion free aluminum housing. It is waterproof and uses a frosted polycarbonate lens that is dust tight as well as water and impact resistant. These lights can be mounted on ceilings or on walls with included hardware or may be suspended from a ceiling. LED linear batten lights can also be linked together to lower installation time and cost.

## Technical Data

Product No.	Watt	Size (Inch)	CCT	Luminous Output	CRI	Voltage	PF
31430	30	4	5000K	~3600lm	>80	AC100~277V	≥0.9
31860	60	8		~7200lm			



# EZ-Mount Tri-proof LED Linear Lights



## Features

## Applications

- ◆ Dust tight as well as water and impact resistant.
- ◆ High lumen output.
- ◆ Wide 120° beam angle.
- ◆ Elegant design.
- ◆ Stable performance.
- ◆ Dimmable version, Sensor version available.

- ◆ Industrial
- ◆ Parking Garage
- ◆ Tunnel
- ◆ Supermarket
- ◆ Warehouse

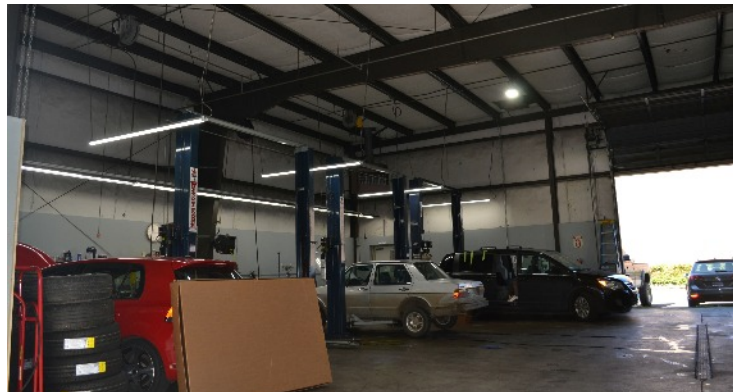


## Product Description

EZ-Mount Tri-Proof LED linear lights by LED Trail are an efficient and heavy-duty alternative to traditional high and low bay light fixtures. These lights are used in industrial lighting, machine shops, textile mills, pharmaceutical plants, warehouse lighting, parking garage lighting, tunnel lighting, supermarket lighting and many more applications. These lights emit a wide 120° beam angle at 100 lumens per watt, using significantly less energy than any fluorescent or other types of lighting, reducing maintenance and re-lamping costs. EZ-Mount Tri-Proof is specialty made with corrosion free aluminium housing. It is waterproof and uses a frosted polycarbonate lens that is dust tight as well as water and impact resistant. These lights can be mounted on ceilings or on walls with included hardware or may be suspended from a ceiling. Optional features include dimming and multi-level sensor versions. EZ-Mount Tri-Proof LED linear lights can also be linked together to lower installation time and cost.

## Technical Data

Product No.	Watt	Size	CCT	Luminous Output	Voltage
32230	30	23.6*3.5*2.4	5000K	~3900lm	AC100~277V
32340	40	35.4*3.5*2.4		~5200lm	
32440	40	47.2*3.5*2.4		~5200lm	
32460	60			~7800lm	
32890	90	94.5*3.5*2.4		~11700lm	
328120	120			~15600lm	



# LED Retrofit Downlight



RD



JB



## Features

- ◆ Energy saving and long life span.
- ◆ Low heat dissipation.
- ◆ Available in various CCT.
- ◆ No mercury or other harmful elements.
- ◆ UV free.
- ◆ High power factor

## Applications

- ◆ Retail displays
- ◆ Museums
- ◆ Hotels
- ◆ Corridors
- ◆ Lobbies



## Product Description

LED Trail's LED down light fixtures provide ambient level light to illuminate a wide range of applications. These LEDs are ideal for track and open recessed fixtures in rooms, hallways, lobbies and retail displays. Our LED downlight fixtures offer high quality white light in a crisp uniform beam. Features include no fade, low site maintenance, instant-on light, superior long life, dimmable, no mercury, and no UV.

## Technical Data

Product No.	Watt	Size/Description	CCT	Luminous Output	Voltage	PF	CRI
RD5101	10	4" Round LED Down Light Dim	3000K 4000K 5000K	~610lm	AC 120V	≥0.9	>90
RD5111	12	6" Round LED Down Light Dim		~1100lm			
RD5118	25	8" Round LED Down Light Dim		~2000lm			
JB5101	10	4" Round LED Down Light W/J-Box		~650lm	AC110~277V		
JB5111	15	6" Round LED Down Light W/J-Box		~1100lm			
JB5118	25	8" Round LED Down Light W/J-Box		~2230lm			



# LED Canopy & Parking Garage Light



## Features

- ◆ 50,000 life hours vs. 10,000 to 15,000 for HID lamps
- ◆ Powerful lumen output combined with effective light distribution
- ◆ No mercury or other harmful elements
- ◆ UL/cUL wet location rated
- ◆ Bi-level motion sensor option available

## Applications

- ◆ Gas stations
- ◆ Commercial awnings
- ◆ Entry ways
- ◆ Covered walkways
- ◆ Loading areas
- ◆ Parking garage lighting



## Product Description

The SunRiver LED Slim Canopy light offers significant energy savings, superior performance, reduced maintenance and unsurpassed durability in a fixture that is designed with a modern aesthetic and more streamlined profile than seen in traditional canopy lighting fixtures. SunRiver canopy lights deliver enhanced lighting control and dramatically improved lighting values, resulting in better uniformity and overall visibility. Housing color available in dark brown(standard, pictured) and white. Bi-level Motion sensor option available.

## Technical Data

Product No.	Watt	Size (Inch)	CCT	Luminous Output	Voltage
LTRSC25W	25	Φ10*3.11	5000K	~3250lm	AC120~277V
LTRSC40W	40			~5200lm	
LTRSC55W	55			~7150lm	



# Crater UFO LED High Bay Lights



## Features

- ◆ Easy to install and operate.
- ◆ No UV or IR in beam.
- ◆ Energy saving, long service life.
- ◆ Light is soft and uniform, safe to eyes.
- ◆ Instant start, NO flickering, NO humming.
- ◆ Green and eco-friendly without Mercury.

## Applications

- ◆ Manufacturing facilities
- ◆ Warehouses
- ◆ Sports arenas
- ◆ Other industrial, and commercial applications

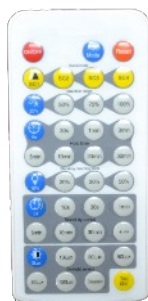


## Product Description

Whether illuminating a warehouse, sports arena, manufacturing facility, or other commercial applications, Crater UFO LED High Bays deliver the required efficacy, brilliant color quality, efficient light output and impressive long life necessary to get the job done. Crater high bay lighting is generally designed for structures with over 20 ft. (6 meter) of height in warehouse facilities, storage areas, hangers, recreational centers, and other general high bay applications. Crater UFO High Bays are IP65 and Wet Rated. Integrated occupancy sensor version available.

## Technical Data

Product No.	Watt	Size (Inch)	CCT	Replaces	Luminous Output	Voltage	IP	Dimmable
LTR-HB18B-100-150	100, 125, 150	Ø12.2*7.3	3500K, 4000K, 5000K	~300-400W HID	15500~23000lm	AC 100~277V	65	0-10V
LTR-HB18B-200-240	200, 240			~400-750W HID	31000~37200lm			
LTR-HB18B-300	300	Ø14.6*7.9		~750-1000W HID	~46500lm			



Integrated occupancy sensor available



# Linear LED High Bay Lights



## Features

## Applications

- ◆ Easy to install and operate.
- ◆ No UV or IR in beam.
- ◆ Energy saving, long service life.
- ◆ Light is soft and uniform, safe to eyes.
- ◆ Instant start, NO flickering, NO humming.
- ◆ Green and eco-friendly without Mercury.
- ◆ Manufacturing facilities
- ◆ Warehouses
- ◆ Rec centers
- ◆ Other industrial, and commercial applications



## Product Description

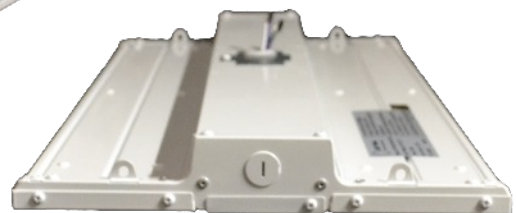
LED Trail Linear LED high bay lights are part of a new generation of lighting products that are widely used in high power lighting across the globe. Hanging mounts are available and a range of wattages will replace any and all types of linear high bay lighting. LED Trail high bay lighting is generally designed for structures with over 20 ft. (6 meter) of height in warehouse facilities, storage areas, hangers, recreational centers, and other general high bay applications.

## Technical Data

Product No.	Watt	Size (Inch)	CCT	Luminous Output	Voltage	Dimming
LTR-PHB08D-165	110, 135, 165	23.83*12.6*2	4000K, 5000K	14000~20800lm	AC120~277V	0-10V



165W



Integrated occupancy sensor available

# SunRiver G14 LED Flood Lights



LTR-FL14-15W



## Features

- ◆ Top of the line chips and drivers.
- ◆ Highly efficient heat dissipation technology.
- ◆ No UV or IR in the beam.
- ◆ Instant start, NO flickering, NO humming
- ◆ Green and eco-friendly with no mercury

## Applications

- ◆ Gymnasiums, Exhibition halls
- ◆ Pedestrian walkways and tunnels
- ◆ Indoor and outdoor parking
- ◆ Universities, hospitals, and other campuses
- ◆ Many other commercial & outdoor applications

## Product Description

LED Trail's SunRiver G6 LED Flood light offers great value, excellent illumination, enhanced security and increased safety for many indoor and outdoor lighting applications. With innovative design and impressive performance, this fixture provides versatility and great light coverage to meet the most demanding specifications while reducing energy usage by as much as 80%. Photocell and surge protector options available.

## Technical Data

Product No.	Watt	Size (Inch)	CCT	Luminous Output	PF	Voltage	IP
LTR-FL14-15W	15	9.4*4.7*1.9	5000K	~1950lm	≥0.9	AC100~277V	65
LTR-FL14-35W	35	10.7*5.8*1.9		~4550lm			
LTR-FL14-55W	55			~7150lm			



LTR-FL14-35W



# SunRiver LED Flood lights



## Features

- ◆ High Efficiency.
- ◆ Integrated driver design provides up to 90% transfer efficiency.
- ◆ Light attenuation is less than 3% in 10000 hrs.
- ◆ Waterproof, IP65 rating
- ◆ Die-Cast Aluminum Housing

## Applications

- ◆ Pathway lighting
- ◆ Commercial Exteriors
- ◆ Facade lighting
- ◆ Subway, bus or train station
- ◆ Landscape lighting



## Product Description

The simple yet elegant design of LED Trail's SunRiver floodlight has incorporated excellent heat dissipation using high purity aluminum alloy. The cover has been treated for strength and optimum illumination. This innovative LED flood light offers superior efficiency and low light attenuation. This slim-profile and lightweight fixture fits most flood lighting requirements with excellent illumination for outdoor lighting applications.

## Technical Data

Product No.	Watt	Size (Inch)	CCT	Luminous Output	IP	PF	Voltage
LF4506-15W	15	L4.3*W1.5*H5.4	5000K	~1730lm	65	≥0.9	AC100~277V
LF4506-30W	30	L7.3*W1.7*H7.0		~3750lm			
LF4506-50W	50	L8.54*W1.9*H7.9		~6250lm			
LF4506-70W	70	L10.5*W2.25*H7.5		~8750lm			
LF4506-90W	90	L10.5*W2.25*H9.3		~11250lm			



50W



90W

# SunRiver G6 LED Flood Lights



LF45150



## Features

- ◆ Top of the line chips and drivers.
- ◆ Highly efficient heat dissipation technology.
- ◆ No UV or IR in the beam.
- ◆ Instant start, NO flickering, NO humming
- ◆ Green and eco-friendly with no mercury

## Applications

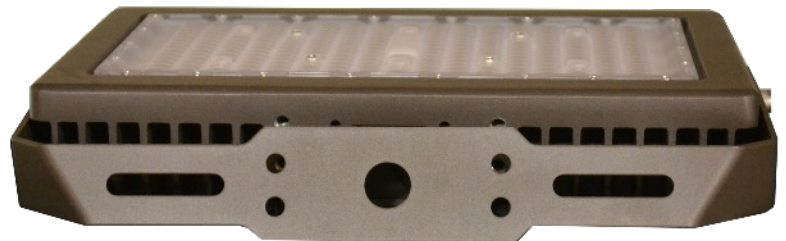
- ◆ Gymnasiums, Exhibition halls
- ◆ Pedestrian walkways and tunnels
- ◆ Indoor and outdoor parking
- ◆ Universities, hospitals, and other campuses
- ◆ Many other commercial & outdoor applications

## Product Description

LED Trail's SunRiver G6 LED Flood light offers great value, excellent illumination, enhanced security and increased safety for many indoor and outdoor lighting applications. With innovative design and impressive performance, this fixture provides versatility and great light coverage to meet the most demanding specifications while reducing energy usage by as much as 80%. Photocell and surge protector options available.

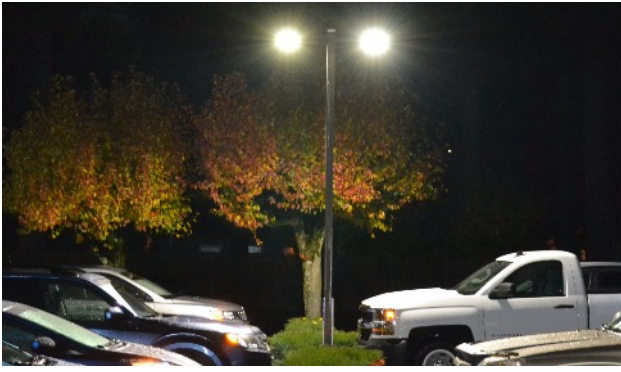
## Technical Data

Product No.	Watt	Size (Inch)	CCT	Luminous Output	PF	Voltage	IP
LF45150	150	13.2*11.9*4.0	5000K	~18600lm	≥0.9	AC100-277V	65
LF45300	300	17.7*12.2*4.0		~38000lm			



LF45150

# Astoria LED ShoeBox Fixture



## Features

- ◆ Energy saving and long life span.
- ◆ Philips chip, MeanWell driver.
- ◆ Instant Start, NO flickering, NO humming.
- ◆ No mercury or other harmful elements.
- ◆ High power factor.

## Applications

- ◆ Parking Lot
- ◆ Roadway
- ◆ Park
- ◆ Campus
- ◆ Sports stadium

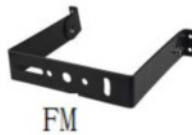


## Product Description

Astoria LED ShoeBox Lights are a fantastic alternative to environmentally harmful and inefficient High Pressure Sodium (HPS) and Metal Halide (MH) lamps. These lights have been optimized to deliver outstanding efficiency and high application performance to provide great light coverage and very attractive return on your investment. Astoria LED ShoeBox lights are installed at car dealerships, parking lots, main roadways, parks and university campuses. Photocell available upon request.

## Technical Data

Product No.	Watt	Size (Inch)	CCT	Luminous Output	PF	Voltage	IP
43060	60	22.2*12.6*4.9	5000K	~8700lm	>0.90	AC100~277V	65
43100	100			~16800lm			
43150	150			~19500lm			
43300	300	24.6*24.9*4.9		~39000lm			
43400	400	~52000lm					
43480	480	~62400lm					



# SunRiver Adjustable LED Wall Pack Lights



48080



## Features

- ◆ Up to 70% less power consumption compared to traditional wall pack lighting
- ◆ Easy to install and operate
- ◆ Powerful lumen output combined with effective light distribution
- ◆ No mercury or other harmful elements
- ◆ Very low heat discharge
- ◆ No UV radiation

## Applications

- ◆ Courtyard lighting
- ◆ Entrance lighting
- ◆ Outdoor landscape lighting
- ◆ Other industrial and

## Product Description

SunRiver adjustable LED wall pack lights are a fantastic alternative to environmentally harmful and inefficient High Pressure Sodium (HPS) and Metal Halide (MH) lamps. These DLC Premium adjustable wall packs have been optimized to deliver outstanding efficiency, high lumens, and high application performance to provide great light coverage and very attractive return on your investment. The modern look and versatility makes it a great choice for many new and remodel applications.

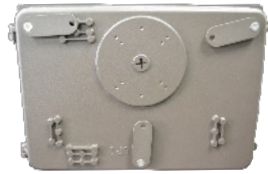
## Technical Data

Product No.	Watt	Size (Inch)	CCT	Luminous Output	Power Factor	Voltage	IP
48025	25	9.1*5.4*5.2	5000K	~3300lm	>0.9	AC100~277V	65
48040	40			~5100lm			
48060	60			~7700lm			
48080	80	9.1*8.9*5.2		~12000lm			



48025/48040/48060

# SunRiver LED Wall Pack Lights



WP4840/60/120



## Features

- ◆ Integrated photocell
- ◆ Excellent light distribution with no dark shadows.
- ◆ Top of the line chips and components.
- ◆ High pressure die cast housing with anti-static powder coating.
- ◆ Premium efficiency cooling system.
- ◆ Silicon rubber gasket with durable UV stabilized lens.

## Applications

- ◆ Exterior building lighting
- ◆ Carports
- ◆ Loading areas
- ◆ Driveways
- ◆ Parking areas

## Product Description

SunRiver LED wall pack lights are a fantastic alternative to environmentally harmful and inefficient High Pressure Sodium (HPS) and Metal Halide (MH) lamps. SunRiver LED wall packs have been optimized to deliver outstanding efficiency and high application performance to provide great light coverage and very attractive return on your investment. The traditional look of this wall pack makes it a great choice for many new and remodel applications. These DLC listed wall pack lights are installed at commercial buildings, car dealerships, parking lots, parks, retail facilities, multi-family buildings and university campuses, etc.

## Technical Data

Product No.	Watt	Size (Inch)	CCT	Luminous Output	Voltage	IP
WP4820	20	14.2*9.3*9.9	3000K/4000K/5000K	~3300lm	AC 100~277V	65
WP4840	40			~4920lm		
WP4860	60			~7210lm		
WP48120	120			~15600lm		
LTR-SWP11-60	30/45/60			3690~7210lm		



WP4820





Want to become a part of the  
LED Trail dealer program?  
Contact us at [sales@ledtrail.com](mailto:sales@ledtrail.com)



Scan and get connected to us!

LED Trail  
3479 NW Yeon Avenue  
Portland, OR 97210  
Phone: 971-200-2760  
Fax: 800-507-8044  
[info@ledtrail.com](mailto:info@ledtrail.com)  
[WWW.LEDTRAIL.COM](http://WWW.LEDTRAIL.COM)

Headquartered in  
Portland, Oregon, USA

